

# Product Information



## LINEA

### 5946UAP125R36-32S300H130

EAN 4031582348385

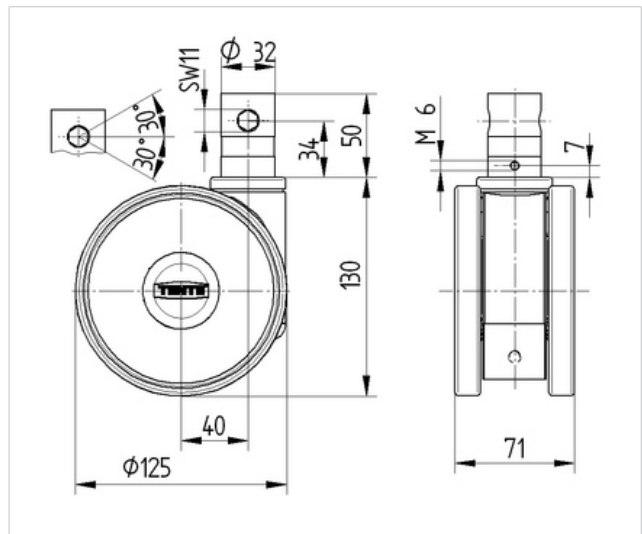
Swivel castor with central lock, housing made of Polyamide, precision ball bearing in swivel head. Wheel centre made of Polyamide, Tread: Polyurethane, precision ball bearing, stem with cam hole for profile bars, short version

**Hint:** TÜV Süd certified product.

#### Technical Data

Wheel diameter	125 mm
Width of Tread	15 mm
Castor width	71 mm
Bolt-Ø	32 mm
Bolt length	50 mm
Offset	40 mm
Swivel Interference	205 mm
Overall height	130 mm
Temperature	- 10 / + 40 °C
Standard	EN 12531
Weight	0.876 kg
Load capacity	150 kg
Load capacity (static)	300 kg
Swivel Radius	102.5 mm

Roll performance	+	+	+	+	+
Movement noise	+	+	+	+	+
Attrition	+	+	+	+	+
Corrosion resistance	+	+	+	+	+



**DDC**  
Design Award Winner  
German Designer Club

**product**  
design award  
winner

**interzum**  
award  
interzum award:  
intelligent  
material & design

# Product Information



## LINEA

**5946UAP125R36-32S30OH130**

EAN 4031582348385

