

INTEGRAL

2044XSX125R36-32S30

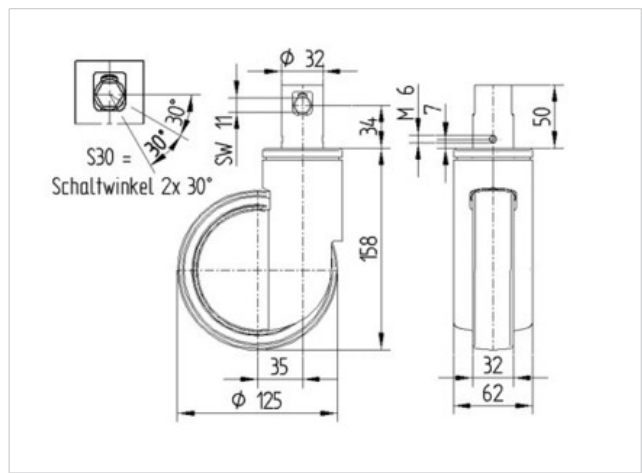
EAN 4031582340808

Swivel castor with central, total or directional lock, Frame made of pressed steel, precision ball bearing in swivel head and wheel, housing cover made of synthetic plastics. Wheel centre made of Polyamide, electric conductive, Tread made of injected Polyurethane, with threadguards, precision ball bearing, sealed., stem with cam hole for profile bars, short version

Hint: TÜV Süd certified product. Washable castors must be sealed in the fitting area by the hospital bed manufacturer.



Technical Data	
Wheel diameter	125 mm
Width of Tread	32 mm
Bolt-Ø	32 mm
Bolt length	50 mm
Offset	35 mm
Swivel Interference	195 mm
Overall height	158 mm
Temperature	- 30 / + 80 °C
Standard	EN 12531
Weight	0.998 kg
Load capacity	150 kg
Load capacity (static)	300 kg
Swivel Radius	97.5 mm
Hardness of tread	D 40 Shore



Roll performance	+	+	+	+	+
Movement noise	+	+	+	+	+
Attrition	+	+	+	+	+
Corrosion resistance	+	+	+	+	+



Product Information



INTEGRAL

2044XSX125R36-32S30

EAN 4031582340808

